

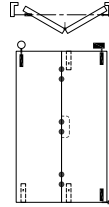
This Guide to Quantities is only applicable to Data Sheets D180.2

Specification for Individual Panels

Track System	Interfold 35F
Max Panel Height	2600mm
Max Panel Weight	35kg
Max Panel Width	820mm
Min Panel Thickness	35mm
Max Number of Panels	4 each direction

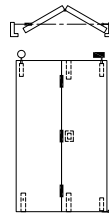
2 Panel Unit - Outward Opening

	Quantities	Product Codes
Track	1	100-20
Pivot Set	1	BWS1F-35H
Hinge Handle Set	1	BW3-35H
End Hanger Set	1	BWS2F-35CH
Flush Bolt Top	2	360
Flush Bolt Bottom		360E



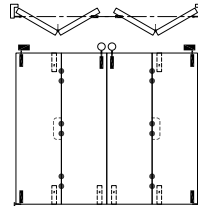
2 Panel Unit - Inward Opening

	Quantities	Product Codes
Track	1	100-20
Pivot Set	1	BWS1F-35H
Hinge Set	1	BW5-35H
Flush Pull	1	401
End Hanger Set	1	BWS2F-35CH
Flush Bolt Top	1	360N
Flush Bolt Bottom	2	360E



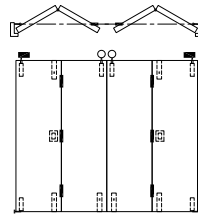
2+2 Panel Unit - Outward Opening

	Quantities	Product Codes
Track	1	100-40
Pivot Set	2	BWS1F-35H
Hinge Handle Set	2	BW3-35H
End Hanger Set	2	BWS2F-35CM
Flush Bolt Top	2	360
Flush Bolt Bottom	4	360E



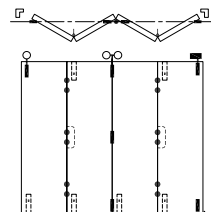
2+2 Panel Unit - Inward Opening

	Quantities	Product Codes
Track	1	100-40
Pivot Set	2	BWS1F-35H
Hinge Set	2	BW5-35H
Flush Pull	2	401
End Hanger Set	2	BWS2F-35CM
Flush Bolt Top	2	360N
Flush Bolt Bottom	4	360E



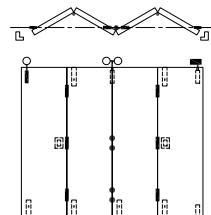
4 Panel Unit - Outward Opening

	Quantities	Product Codes
Track	1	100-40
Pivot Set	1	BWS1F-35H
Hinge Handle Set	2	BW7-35H
Intermediate Hanger Set	1	BWS4F-35CH
End Hanger Set	1	BWS2F-35CH
Flush Bolt Top	2	360N
Flush Bolt Bottom	4	360E



4 Panel Unit - Inward Opening

	Quantities	Product Codes
Track	1	100-40
Pivot Set	1	BWS1F-35H
Hinge Set	2	BW6-35H
Flush Pull	2	401
Intermediate Hanger Set	1	BWS4F-35CH
End Hanger Set	1	BWS2F-35CH
Flush Bolt Top	2	360N
Flush Bolt Bottom	4	360E





blank page

Application

For residential and commercial interior folding panels that close against rebate.

Interfold 35F hardware is suitable for timber systems without bottom guide, with all panels of equal width.

Specifically designed for applications where sound and light proofing is required.

Interfold 35F hangers are cast 316 marine grade stainless steel with precision chrome bearings and nylon outer tyres.

Panel Specification

Track System:	Interfold 35F
Max Panel Height	2600mm
Max Panel Weight	35kg
Max Panel Width	820mm
Min Panel Thickness	35mm

Units of up to four panels can be pivoted to each side of the opening.

Panels should be constructed to provide secure fitting for the pivot, hanger and hinge sets. Sets include timber screws.

Hardware Specification

Track:	100
Material	Aluminium
Finish	Mill or Clear Anodised
Standard Lengths	2000mm, 3000mm, 4000mm and 6000mm

Hanger Sets:	
End Hanger - Non mortice hinges	BWS2F-35CH
End Hanger - Mortice hinges	BWS2F-35CM
Intermediate Hanger Set	BWS4F-35CH

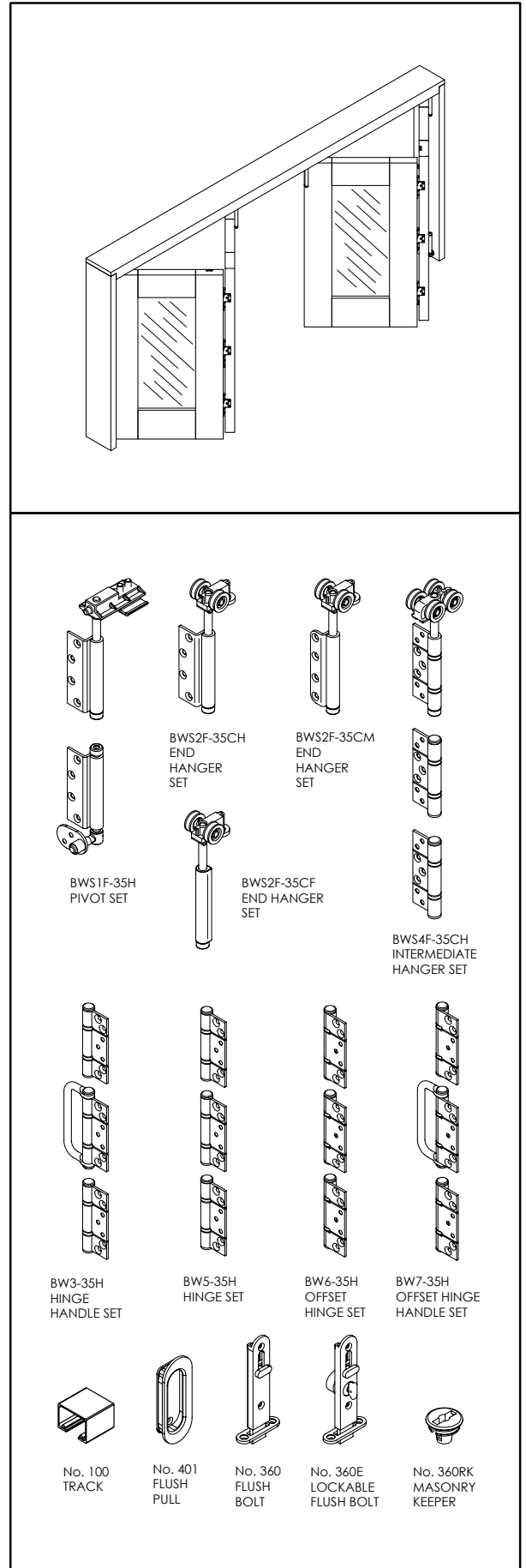
Pivot Set:	
Top and Jamb Pivots	BWS1F-35H

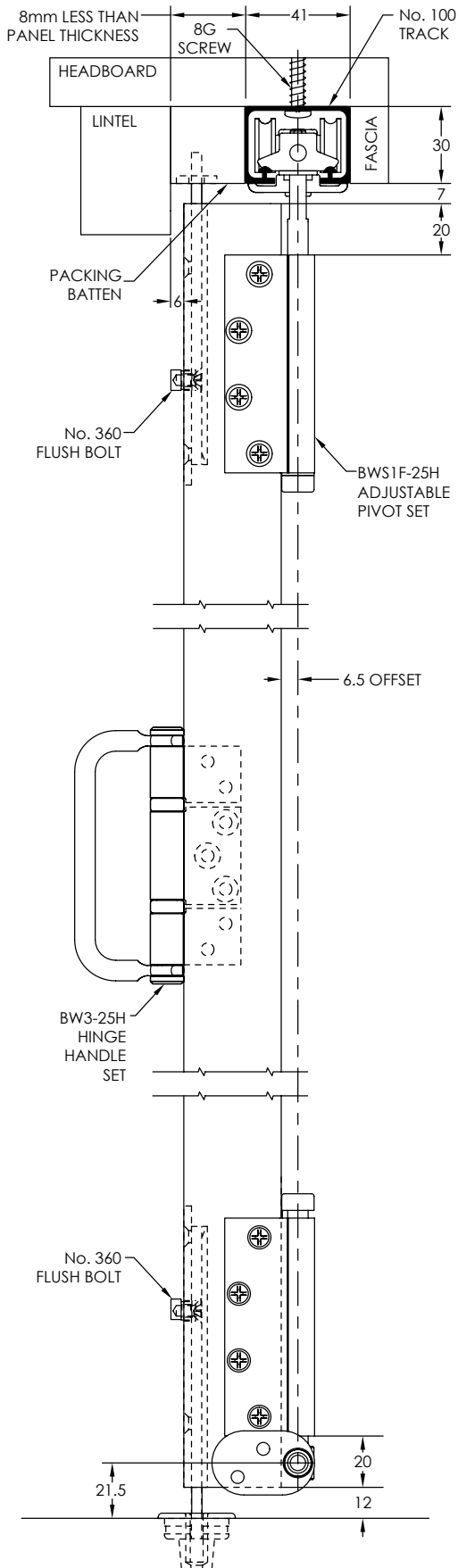
Hinge Sets:	
Hinge Handle Set	BW3-35H
Offset Hinge Handle Set	BW7-35H
Hinge Set	BW5-35H
Offset Hinge Set	BW6-35H

Accessories:	
Flush Pull	401
Flush Bolt Standard	360
Flush Bolt Lockable	360E
Flush Bolt Necked	360N
Flush Bolt Long	360L
Masonry Keeper	360RK

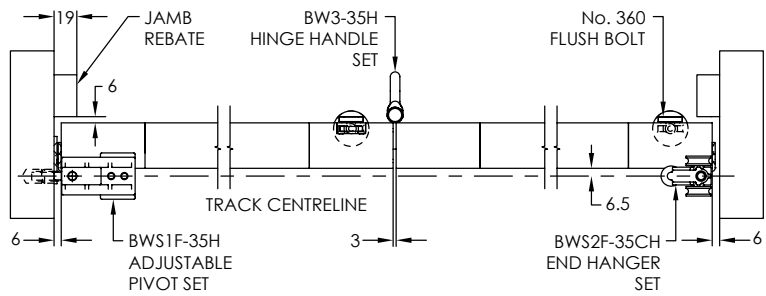
Finish options

Hardware: (SS) Satin Stainless, (PS) Polished Stainless
 Flush Bolts: (SN) Satin Nickel, (PN) Polished Nickel

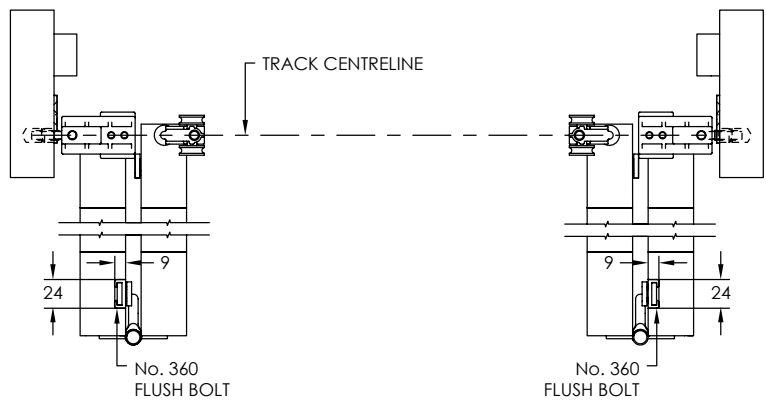




2+0 PANEL OUTWARD OPENING SYSTEM - CLOSED
(SHOWN WITHOUT TRACK OR HEAD SECTION)



2+2 PANEL OUTWARD OPENING SYSTEM - OPEN
(SHOWN WITHOUT TRACK OR HEAD SECTION)



2+2 PANEL OUTWARD OPENING SYSTEM - CLOSED
(TYPICAL OUTSIDE ELEVATION)

