

## Application

For timber and aluminium sliding panels, interior and exterior applications.

Designed for straight sliding partitions or fully glazed patio doors. Also suitable for flush panelled construction.

The bottom roller design is suited to applications where the supporting structure or lintel is insufficient for the weight of the panel or where headroom is limited.

To cover the width of opening, any number of panels can be used on single or multiple lines of rail, panels can slide to one or both sides.

Where fitted externally, a canopy is recommended to protect the top guide channel, brackets and top guide rollers.

## Panel Specification

Rail System:	Timberoll 300N
For Individual Panels:	
Max Panel Height	3000mm
Max Panel Weight	300kg
Min Panel Thickness	40mm

Panels must be constructed with bottom rails of at least 150mm depth to accommodate the concealed, mortised bottom rollers. Panel weight is carried on the floor permitting the use of a light overhead structure.

## Hardware Specification

Top Guide Channel:	94PPA Aluminium Support & Polypropylene
Medium Duty	Clear Anodised
Standard lengths	2000mm, 3000mm, 4000mm, 5000mm and 6000mm.

Heavy Duty	900A Aluminium with safety lip
Finish	Clear Anodised
Standards Lengths	2000mm, 3000mm, 4000mm and 6000mm.

Top Guide Brackets:	1SS/250 Stainless Steel
For single line - face fitted	5SS/250 Stainless Steel
For double line - face fitted	
Constructed from cast 316 Stainless Steel, fit at 400mm maximum centres.	

Top Guide Rollers (2 per panel):	106RB/94
Top Plate Fitting	113RB/94
Corner Fitting	
Cast 316 Marine grade stainless with precision stainless steel bearings.	

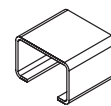
Top Plate Fitting	61SS/900 (for 900 Top Guide Channel)
Cast 316 Marine grade stainless plate with double nylon rollers with lateral adjustment to prevent rattle.	

Bottom Rollers (2 per panel):	913DBA-300N
Double bogie roller	
Full stainless steel body with precision stainless bearing and acetal tyre. End access for vertical adjustment.	

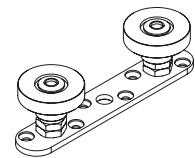
Bottom Rail:	913A
Material	Aluminium
Finish	Clear anodised
Standard lengths	2000mm, 3000mm, 4000mm and 6000mm.
Bottom Rail is drilled and countersunk for direct fitting.	

Interlocker:	924
Material	Aluminium
Finish	Clear Anodised (CA), Black Anodised (BLK) and Anodised Bronze (BZ)
Standard lengths	4800mm or pair of 2400mm lengths (to suit typical 2400mm high panel)
Interlocker is drilled and countersunk, comes with brush seal.	

Accessories:	924-DC
Door Collector - multiple panels	456
Flush Bolt	401
Flush Pull	AQ21
Frame Seal	



No. 900A  
GUIDE CHANNEL



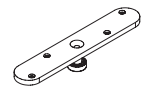
No. 61SS/900  
TOP GUIDE ROLLER



No. 94PPA  
CHANNEL



No. 113RB/94  
GUIDE ROLLER



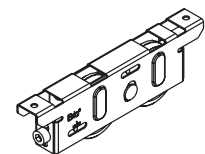
No. 106RB/94  
GUIDE ROLLER



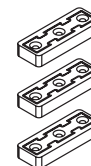
No. 913A  
BOTTOM RAIL



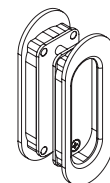
No. 924  
INTERLOCKER



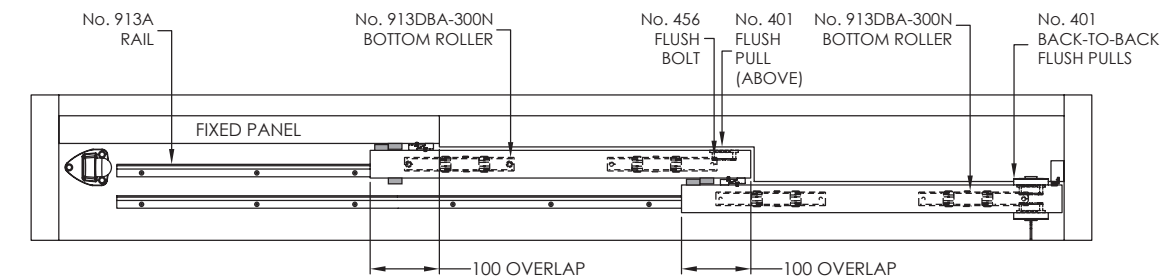
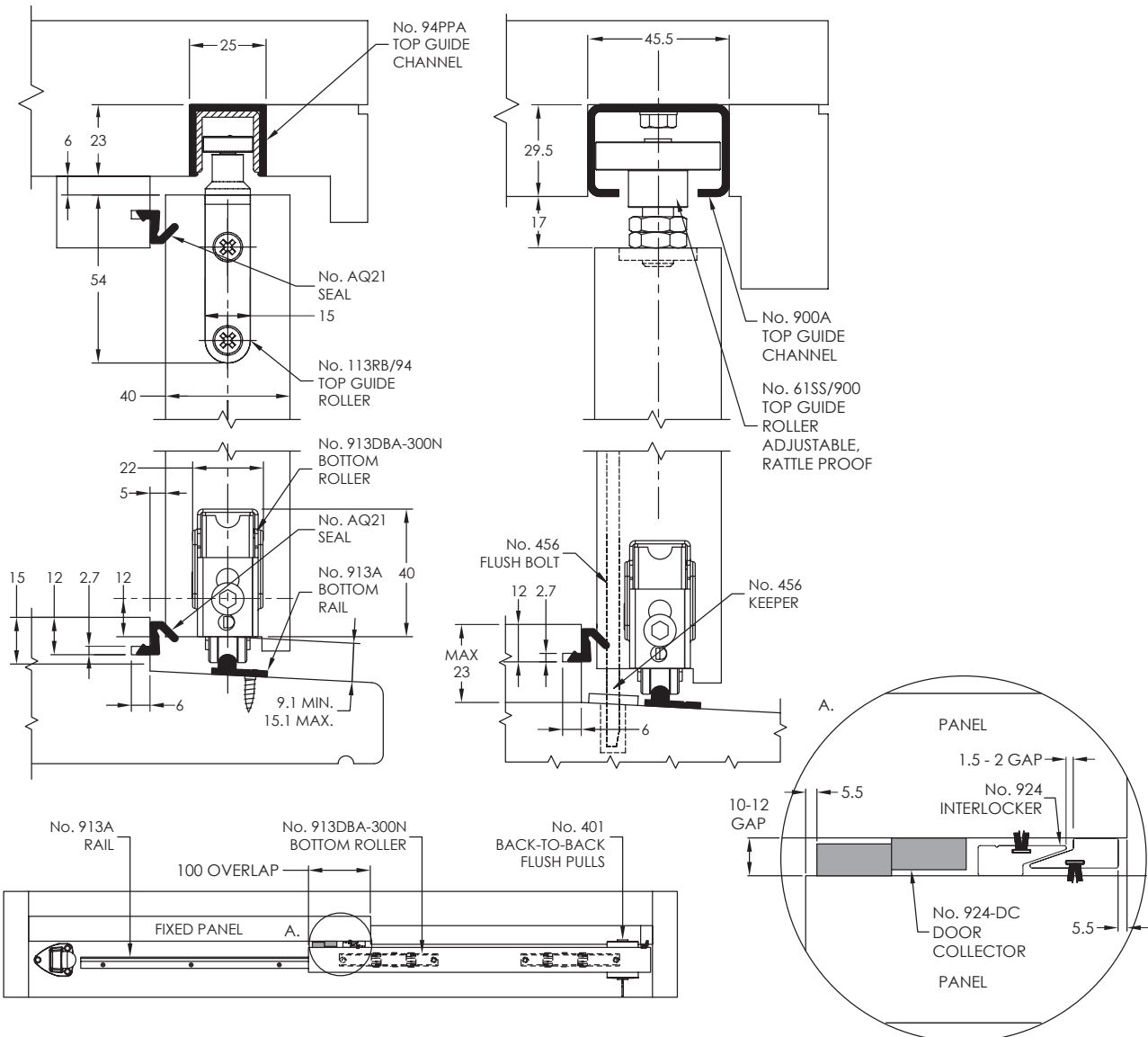
No. 913DBA-300N  
BOTTOM ROLLER



No. 924-DC  
DOOR COLLECTOR



No. 401B2B  
BACK-TO-BACK  
FLUSH PULLS



913DBA-300N END ADJUSTABLE ROLLER

